

NON RETURN VALVES

WASTOP NON-RETURN VALVE 100-1000

APPLICATION

The WaStop inline non-return valve can be used in various environments to prevent backflow into pipeline systems. It is designed to be un-obtrusive and vandal resistant.

OPERATION

The WaStop valve is designed for a number of installation methods, making it very versatile for uses such as tidal outfalls, sewerage chambers and domestic protection.

The WaStop is made up of a stainless steel 304 tube, incorporating a cone-shaped chloroprene membrane. The membrane allows flow to pass in the desired direction, however when back-flow occurs, this fills the membrane, sealing the pipe. The design of the WaStop means that it does not block easily, and that the leakage is minimal when debris becomes trapped.

As the WaStop does not rely on gravity to close the membrane, it does not need to be fitted against a vertical headwall. This means that it can be installed in any plane, or inline between two pipes.

The WaStop can be fitted in a number of ways, such as wall mounted at the inlet or outlet using the "manhole installation" wall mounting method, flange mounted or mounted using a flexible coupling.

The WaStop is available in a number of standard sizes, suitable for up to 8m of water pressure, however special sizes and pressures are available on request. For some applications, Stainless Steel 316 pipe can be used, for example in heavily saline environments, or for smaller applications, HDPE tube can be used to support the membrane, which can be coupled in the usual ways.

BENEFITS

- Easy to install.
- Vandal Resistant
- Versatile mounting methods
- Virtually maintenance free.
- Customised production.
- Short turnaround.



SPECIFICATIONS

Sizes:	Ø 100 mm to Ø 1000 mm
Operating pressure:	Up to 8 MWC
Mounting method	Manhole installation, flange or flexible coupling(s)
Higher pressures and larger dimensions on request.	

MATERIALS

Tube:	SS 304 (316 on request)
Membrane:	Chloroprene
Membrane Fixings:	SS304
Seal:	Chloroprene

Supplied by

ACE AQUATIC
CONTROL
ENGINEERING LTD

HALL FARM, MAIN STREET, RAMPTON, NOTTS,
DN22 0HR.
PHONE 01777 249080, FAX 01777 249069
WWW.AQUATICCONTROL.CO.UK
EMAIL: INFO@AQUATICCONTROL.CO.UK

Installation

Various installation methods are available, to suit existing situations.

Outlet/Manhole Installation:

The INR is fitted with a stepped joint coupling, the wider end of the joint coupling fits around the protruding pipe. (This method can also be reversed for a pipe inlet)

Manhole installation 1:

The pipe is installed flush with a headwall. The INR is pushed into the pipe, then secured to the headwall using angled brackets supplied. The brackets are fitted using expanding or resin anchors.

Inline mounting:

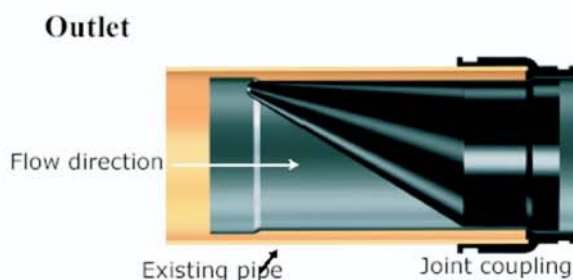
The INR is placed between two sections of pipe and fitted using stepped joint couplings. Where the pipes are flanged, the INR can be fitted with flanges in place of the joint couplings.

Manhole Installation 2:

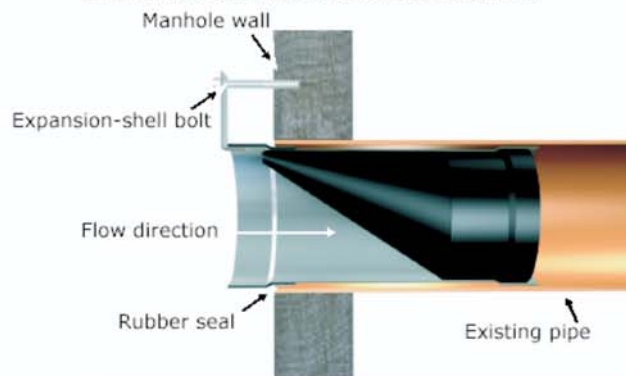
The pipe is installed to protrude from the headwall and the INR is fitted as per the outlet installation. (This method can be reversed for an outlet to the pipe)

Other methods:

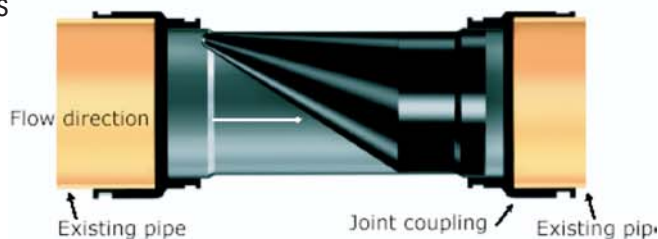
Where required, either end of the INR can be fitted with a flange to your requirements.



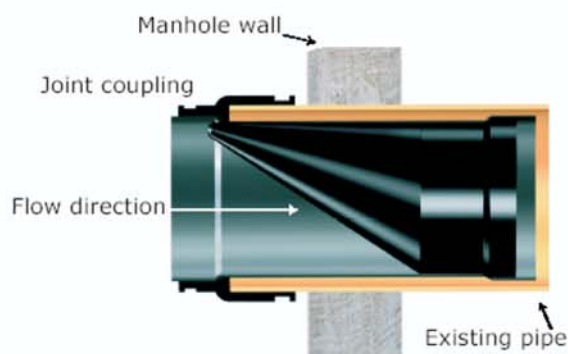
Manhole installation alternative 1



Installation for existing pipe



Manhole installation alternative 2



Product Overview

Non return valve type WaStop

- Materials:** SS304, Chloroprene
- Standard passage:** Ø 80 mm to Ø 1000 mm
- Working pressure:** Maximum 8 Mwc

The WaStop incorporates two main components- a chloroprene membrane and a stainless steel tube. It can be installed in all planes, and in various mounting methods. The tube also has a seal around the outside to seal against the pipe.